

# ARCHITECTURAL FRAMES

*In Molded Plastic*

Architectural Frames in Molded Plastic is a round and square corner system designed for quality interior signage. Nine different sizes can be interchanged to enhance any interior. The seven colors offered are **PEWTER GRAY, MEDIUM GRAY, ALMOND, BROWN, ARCH BROWN, BLACK AND WHITE.**

← Lobby  
 ↑ Sales Office  
 ↑ Showroom  
 → Finance

**Lending  
 Offices**

1234

Taylor Davidson  
 Accounting Supervisor

WINDOW  
 LENS NOT  
 AVAILABLE

742



Human Resources

Angie Williams



**MEN**

Martha Newell

RECEPTION

407

Dr. Kevin Glenn  
 Diamond Bar Chiropractic

Plates will snap out of frames for easy changes with the use of a suction cup.

Acrylic lenses are laser cut and snap into frames featuring paper graphics.

A black anodized aluminum bracket with concealed screws is used to mount double sided frames.



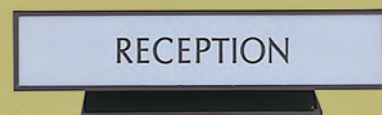
# ARCHITECTURAL FRAMES, PLATES & LENSES

The 7000 series round corner and 8000 series square corner molded plastic frames are designed for quality interior signage. Each frame is molded in one of 7 matte colors: **PEWTER GRAY, MEDIUM GRAY, ALMOND, WHITE, BROWN, ARCH BROWN, AND BLACK.** All frames have a 1/2" outside depth, 1/8" thick walls and mounting holes for attaching to walls. The size of each frame is listed as an inside dimension and the inside radius on the round corner frames is 5/16". Each frame is designed to accommodate all sign material from 1/16" to 1/8" thick, or it's own plastic snap-in plate (See next page).

Part No.	Inside Dimension	Corner
7199	9 1/8" x 9 1/8"	Round
8199	9 1/8" x 9 1/8"	Square
7166	6 1/8" x 6 1/8"	Round
8166	6 1/8" x 6 1/8"	Square
7144	4 1/8" x 4 1/8"	Round
8144	4 1/8" x 4 1/8"	Square
7143	4 1/8" x 13 1/8"	Round
8143	4 1/8" x 13 1/8"	Square
7169	6 1/8" x 9 1/8"	Round
8169	6 1/8" x 9 1/8"	Square
7149	4 1/8" x 9 1/8"	Round
8149	4 1/8" x 9 1/8"	Square
7129	1 3/4" x 9 1/8"	Round
8129	1 3/4" x 9 1/8"	Square
7124	1 3/4" x 4 1/8"	Round
8124	1 3/4" x 4 1/8"	Square
8181	8 1/2" x 11"	Square Only

All holders and frames can be combined for quantity discounts.

**See price list for current pricing and quantity discounts.**



**7500 BASE** snaps into the 1 3/4" x 9 1/8" frame (both round or square) making a desk or counter unit. Base is 6"

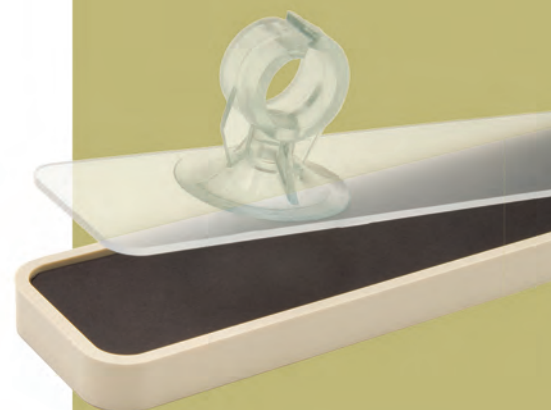
## FRAMES WITH LENSES

Each frame size in both round or square corner is available with an .080 semi-flexible non-glare acrylic lens. Lenses are laser cut with small tabs that snap into frames. Lenses can be painted, screen printed, engraved or have tactile and braille attached to them. Each frame is supplied with a snap in lens and a matte black backing insert.

Add a "L" in front of the part number to request a lens.

EX: L8199BL is a black 9-1/8" x 9-1/8" frame with lens

**Custom colors available.  
Call for details.**



# ARCHITECTURAL PLATES *In Molded Plastic*

## Color Swatches

Gray/Gray  
Gray/Black  
Gray/White  
Gray/Arch Brown

Almond/Black  
Almond/Brown  
Almond/Arch Brown  
Almond/Almond  
Almond/White

Brown/Brown  
Brown/Almond

Arch Brown/Arch Brown  
Arch Brown/Almond  
Arch Brown/White

Black/Black  
Black/Almond  
Black/Gray  
Black/White

Red/White  
Blue/White

Burgundy/White  
Burgundy/Gray

White/White  
White/Black

Brushed Gold/Black  
Brushed Silver/Black

Teal/White  
Teal/Gray  
Teal/Almond

Mauve/White  
Mauve/Gray  
Mauve/Almond

## MOLDED PLATES FOR ARCHITECTURAL FRAMES

Molded plates are 1/8" thick with a 1/16" reveal around the perimeter leaving a handsome border. Each plate is designed to snap in and out of respective frames for changeable signs, or can be permanently mounted with two sided tape. Plates are molded in the same seven colors as the frames and then are stamped with a tough durable matte finish suitable for hot stamping, vinyl letters, or silk screening. For 2 ply engraving, 7 core colors and 13 surface colors can be combined for a quality contrasting engraved plate.

Molded Part No.	Laser Part No.	Plate Size	Corner
7299	5299	9 1/8" x 9 1/8"	Round
8299	6299	9 1/8" x 9 1/8"	Square
7266	5266	6 1/8" x 6 1/8"	Round
8266	6266	6 1/8" x 6 1/8"	Square
7244	5244	4 1/8" x 4 1/8"	Round
8244	6244	4 1/8" x 4 1/8"	Square
7243	5243	4 1/8" x 13 1/8"	Round
8243	6243	4 1/8" x 13 1/8"	Square
7249	5249	4 1/8" x 9 1/8"	Round
8249	6249	4 1/8" x 9 1/8"	Square
7229	5229	1 3/4" x 9 1/8"	Round
8229	6229	1 3/4" x 9 1/8"	Square
7224	5224	1 3/4" x 4 1/8"	Round
8224	6224	1 3/4" x 4 1/8"	Square
7269	5269	6 1/8" x 9 1/8"	Round
8269	6269	6 1/8" x 9 1/8"	Square
	6281	8 1/2" x 11"	Square

Colors are only representative.  
Request a color keychain for exact color.

## LASERABLE ARCHITECTURAL PLATES in popular colors

Plates suitable for use with Laser Engraving equipment.

Plates are 1/16" thick and are designed to snap in and out of their respective frames. Specify matte or gloss finish.

### NEW LASER PLATES FOR 7000 & 8000 SERIES

Available color combinations include:

#### Top Color/Core Color

Red/White  
Blue/White  
Black/White  
Green/White  
Navy/White  
Burgundy/White  
Brown/White  
Pine Green/White  
Teal/White  
Medium Walnut/White  
Charcoal Marble/White

Verde Green Marble/White  
Cranberry Marble/White  
Rustico Granite/White  
White/Black  
Yellow/Black  
Pumice/Black  
Platinum Marble/Black  
Brushed Gold/Black  
Brushed Aluminum/Black  
Platinum Marble/White

Laserable plates not stocked. May have a lead time up to 10 days.

NEW LASER PLATES FOR 7000 & 8000 SERIES

BLACK	RED	BLUE
WHITE	WHITE	WHITE
GREEN	NAVY	BURGUNDY
WHITE	WHITE	WHITE
MEDIUM WALNUT	TEAL	PINE GREEN
WHITE	WHITE	WHITE
CHARCOAL MARBLE	CRANBERRY MARBLE	RUSTICO GRANITE
WHITE	WHITE	WHITE
VERDE GREEN MARBLE	WHITE	YELLOW
WHITE	BLACK	BLACK
PUMICE	BRUSHED GOLD	BRUSHED ALUMINUM
BLACK	BLACK	BLACK



# ARCHITECTURAL FRAMES *In Molded Plastic*

## DESK BARS

Desk Bars are designed as a simple architectural nameplate holder or counter sign. They are 1" thick and have an inside dimension of 1 3/4" x 9 1/8" to accommodate our injected molded plate. The desk bar is available in **WHITE, PEWTER GRAY, ALMOND, BROWN, ARCH BROWN, AND BLACK.**

Part No.	Inside Dimension	Corner
7029	1 3/4" x 9 1/8"	Round
8029	1 3/4" x 9 1/8"	Square

All holders and frames can be combined for quantity discounts.

**See price list for current pricing and quantity discounts.**

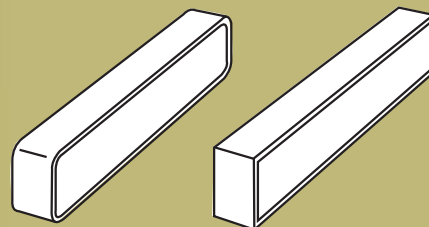
## CORRIDOR FRAMES WITH BRACKETS

Anodized black aluminum bracket conceals screws while mounting a double sided corridor frame. Corridor frames are custom and non-returnable.

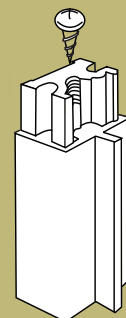
Part No.	Plate Size	Corner
7329	1 3/4" x 9 1/8"	Round
8329	1 3/4" x 9 1/8"	Square
7366	6 1/8" x 6 1/8"	Round
8366	6 1/8" x 6 1/8"	Square
7399	9 1/8" x 9 1/8"	Round
8399	9 1/8" x 9 1/8"	Square
7343	4 1/8" x 13 1/8"	Round
8343	4 1/8" x 13 1/8"	Square

**Jonathan Q. Smith**  
General Manager

**Custom colors available.  
Call for details.**



Inside of frame is not a flat surface. Raised pegs inside.



Mount to Wall

Mounts to Plate

ARCHITECTURAL FRAMES IN MOLDED PLASTIC have many uses and provide a quality, inexpensive solution to your interior signage needs. On this page are some examples of the many ways in which are Architectural Plastic Frames can be used.

