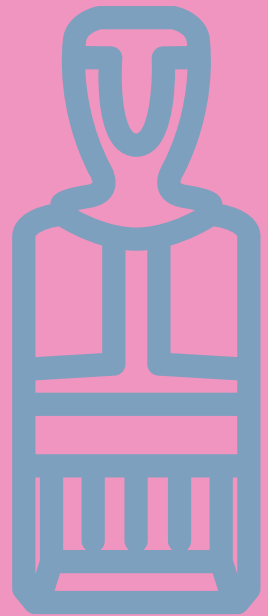
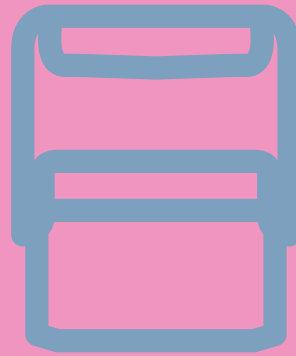




CLASSIX
by Xstamper.



Shachihata

STAMPS • EMBOSSEES • SIGNS



custom stamps • custom stamps • custom stamps •



Customizable pre-inked stamps are convenient for all office and personal uses. Personalize with a message, signature, logo and/or artwork. Stamp is pre-inked for an initial 50,000 impressions and is re-inkable. Ergonomic ABS plastic handle is designed for durability. Stamp material is laser engraved to provide a perfect impression every time. Available in **red**, black, **blue**, **green**, **purple**, **orange**, **light blue**, **light green**, **pink**, **yellow** or **brown** ink. Manufacturer's lifetime guarantee. Our ECO-GREEN mounts are made from at least **50%** post-consumer content.

item	size	lines	char.	%	price
N05	1/8" x 2-3/8"	1	31	76%	23.25
N10	1/2" x 1-5/8"	4	22	65%	27.85
N11	11/16" x 1-15/16"	6	25	63%	31.50
N12	1" x 2"	9	26	58%	37.25
N13	9/16" x 2"	5	26	64%	28.25
N14	5/8" x 2-7/16"	5	32	66%	39.35
N16	1-1/2" x 2-1/2"	13	34	55%	45.95
N18	15/16" x 2-13/16"	7	37	64%	43.00
N24	1-3/16" x 3-1/8"	10	42	54%	77.50
N28	2-9/16" x 3-15/16"	22	47	61%	110.75
N32	5/8" round	3	6	68%	24.25



N32-033



N32-153

Midwestern Escrow
P.O. Box 4590
Stockton, CA 95208

N10-203

BENTON MANUFACTURING CO.

N05-131

STANLEY HUNSBERGER
WELDING SERVICE
BOX 195
LONG BRANCH, TX 75669
(214) 449-0588

N12-135

B. G. GOODRICH COMPANY
439 SUNNYVALE AVE.
BENSENVILLE, IL 60106

N18-123

INTERNATIONAL LEASING CORPORATION
14900 EAST OGDEN AVENUE
P.O. BOX 4553
CHICAGO, IL 60606

N14-134

CONVENTION
EQUIPMENT ONLY

N11-132

PETROPLEX SAVINGS
P.O. BOX 9837
MIDLAND, TX 78702
(915) 340-9942

N16-144

STYLES INTERNATIONAL, INC.
54588 YOUNG DRIVE
CHESTERFIELD, MO 63017

N13-303

PRELIMINARY
PROCEDURE

N24-142

MATHESON GAS PRODUCTS
JACK ABRAHAM, MANAGER
P.O. BOX 3345
1233 STANLEY DRIVE
ATLANTA, GA 30360
(404) 234-9532

N28-136

• pocket stamps • pocket stamps • pocket stamps



item	size	lines	char.		price
N40	1/2" x 2"	4	26	78%	28.25
PN40	1/2" x 2"	4	26	N/A	29.25
N42	5/8" x 2-7/16"	5	32	78%	37.75

This stamp's handle is also a very handy carrying case. This pre-inked pocket stamp won't leak in a pocket or purse so it's great on the go!



ORIGINAL SIGNED BY
NANCY SALVATORE

PN40/N40-132

Amanda M. Pierce

N42-800



MRS. BETTY UNDERDOWN
3191-A AIRPORT LOOP DRIVE
COSTA MESA, CA 92626

PN40/N40-133

We are proud to commit a portion of the proceeds from the sale of the Pink Pocket Stamp (PN40) to support cancer research. For more information on breast cancer, screenings, and treatment, visit www.nbcam.org

• vx custom stamps • vx custom stamps



The XstamperVX® line of pre-inked laser engraved rubber stamps are a great cost-effective solution to your modern office needs. They are an Xstamper product so you know you can trust the craftsmanship and quality. They use Xstamper refill ink and your satisfaction is guaranteed. Available in **red**, black, **blue**, **green**, **purple**, **orange**, **light blue**, **light green**, **pink**, **yellow** or **brown** ink.

INVOICE SENT BI-MONTHLY

C05-111

SAMUEL T. RAYBURN HIGH SCHOOL
25 SAM RAYBURN DRIVE
SAN ANTONIO, TX 78298

C14-303

item	size	lines	characters	price
C04	1/2" x 1-1/16"	4	14	18.95
C05	1/8" x 2-3/8"	1	31	18.95
C10	1/2" x 1-5/8"	4	22	20.95
C11	11/16" x 1-15/16"	6	25	21.95
C12	1" x 2"	9	26	28.75
C14	5/8" x 2-7/16"	5	32	28.75
C16	1-1/2" x 2-1/2"	13	34	36.50
C18	15/16" x 2-13/16"	7	37	33.25
C32	5/8" diameter	3	6	18.95
C34	7/8" diameter	5	10	20.95
C53	1-9/16" diameter	7	20	35.25

INSP.
BY
TIM

C32-135

Mrs. Grace Nakamaru
1782 Cedarview Drive, Apt. 4
Middletown, NJ 12345

C10-313

PROPERTY OF
COWBOY MUSIC
AUSTIN, TX

C04-143

REMOVED

C11-141

ACCOUNT NUMBER _____
CHECK NUMBER _____
DATE PAID _____
AMOUNT _____

C12-304

WM

C34-132

STEVEN S. MILLER
INSURANCE
P.O. BOX 3499
VERN, GA 31601

C16-134



C53-816

IMPORTANT!
FINAL NOTICE

C18-142

Please find refill ink on p.14 and re-inking instructions on p.15. All prices subject to change.





vx date stamps • vx date stamps •

item	size	lines	characters	price
C82	1-5/16" x 2-1/8"	3&3	34	73.45
C85	1-3/16" diameter	2&2	18	68.20

XstamperVX® date stamps have a pre-inked 6-year date band. Along with the date, they also print: REC'D, PAID, FAX'D and ENT'D. Message colors: **red**, black, **blue**, **green**, **purple**, **orange**, **light blue**, **light green**, **pink**, **yellow** or **brown**.
Date colors: **red**, black, **blue**.



C85-014



C82-522



self-inking stamps • self-inking stamps •



Customizable self-inking stamps are convenient for all office and personal uses. Personalize with a message, signature, logo and/or artwork. This stamp re-inks after each use so it's the perfect choice for repetitive stamping. Stamps come inked for up to initial 5,000 - 7,000 impressions and are re-inkable. Ergonomic handle is designed for durability and comfort. Available in **red**, black, **blue**, **green** or **purple** ink. Manufacturer's satisfaction guarantee.

item	size	lines	char.	price
P01	3/4" x 3/4"	7	10	18.95
P02	1" x 1"	9	12	19.95
P05	3/8" x 2-3/4"	3	35	25.25
P08	5/8" x 1-7/8"	7	23	21.50
P09	7/8" x 2-1/4"	8	29	21.95
P11	1/2" x 1-1/2"	5	20	20.95
P12	5/8" x 2-5/16"	7	40	21.95
P13	1" x 2-1/2"	9	32	24.25
P14	1-1/2" x 3"	15	36	28.75
P15	5/8" round	3	8	18.75
P16	1-9/16" round	7	19	35.25

PO

P01-141

COD

P02-131

KINGS DEVELOPMENT & ENGINEERING, INC.
310-830-4483

P05-132

CLOSE ACCOUNT

P12-131

FRANKEL, BRACH & WEISS
23458 NEWPORT BEACH BLVD.
NORFOLK, VA 23503

P08-143

TRACY MONTGOMERY
580 Forrest Hill Ste. 435
Miami, FL 33127
305-555-1287

P11-224

NATIONAL VALLEY BANK
FOR DEPOSIT ONLY
TEMPLE, BARKER & ASSOCIATES
ACCT. #9834-2991-4885

P13-134

DR. SCOTT UNCLE, VETERINARIAN
925247 BIG CHIEF AVENUE
SHANNONDALE, WI 66048-9055
(847) 291-2262 FAX (847) 782-9018

P09-134



P15-012



P15-800

**FINAL BILL
OF SALE**

P14-142



P16-814

eco-green stamps • eco-green stamps



ClassiX® ECO-GREEN self-inking stamps have all the great benefits of our traditional P-Series but are constructed with over **50%** recycled content by weight! Available in **red**, black, **blue**, **green** or **purple** ink. Manufacturer's satisfaction guarantee.

item	size	lines	char.		price
EP11	1/2" x 1-1/2"	5	20	57%	20.95
EP12	5/8" x 2-5/16"	7	30	53%	21.95
EP13	1" x 2-1/2"	9	32	54%	24.25
EP14	1-1/2" x 3"	15	36	55%	28.75

**PLEASE READ
THE ENCLOSED
OPERATING
INSTRUCTIONS**

EP14-114

**NO GUARANTEE
LIMITED WARRANTY**

EP11-132

**TERMINATE
SUBSCRIPTION**

EP12-142

**FORWARD THIS TO
PROCUREMENT SPEC.
U.S. COAST GUARD**

EP13-143

seals & embossers • seals & embossers



desk seal



pocket seal



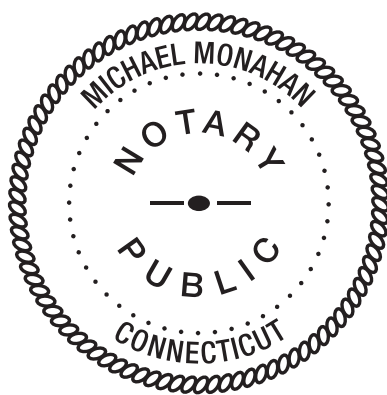
roll-up seal

ClassiX by Xstamper metal desk and pocket embossers have been engineered to produce higher pressure with minimal effort. We offer a desk model, a portable pocket model and a roll up model that allows impressions to be made anywhere on a document. Impression styles are the same for pocket or desk model.

item	size	style	price
E11	1-1/2" round	pocket	32.95
E12	1" x 2"	pocket	32.95
E13	1-1/2" round	desk	47.50
E14	1" x 2"	desk	47.50
E16	2" round	desk	47.50
E17	1-1/2" round	roll up	55.25
E18	2" round	pocket	47.50



E11/E13/E17-756



E16/E18-753

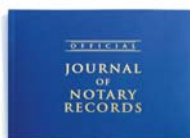
**BRADLEY THOMAS
NOTARIAL SEAL
STATE OF MONTANA**

E12/E14-133



45590 seal highlighter - \$27.50

A stamp pre-inked stamp with black ink and a flat impression area sized to match our round seal embossers. When pressed lightly over an embossed impression, it darkens the raised areas for increased readability.



45500 notary journal - \$39.75

Protect yourself by making detailed records or your official acts as a notary in our notary journal. This 141-page book has ample space for detailed records and thumb prints for over 500 entries.





xpedater • xpedater • xpedater • xpedater •



The XpeDater® prints your custom message along with the day, month and year over a 6-year period. A simple twist of the base and a turn of the dials changes the date, eliminating the need for tweezers! The year band also prints: A.M., P.M., REC'D, PAID, FAX'D and ENT'D. All XpeDaters come with an inked base for a permanent home on a desk or counter top. The N75 and N85 models also come with a handy ink cap to make them portable. Available in **red**, **black**, **blue**, **green**, **purple**, **orange**, **light blue**, **light green**, **pink**, **yellow** or **brown** ink.

item	size	lines	char.		price
N75	1-1/16" round	1&1	12	93%	59.95
N77	1-3/4" round	1&3	14	90%	88.75
N78	1-3/4" round	1&3	14	90%	88.75
N85	1-3/16" round	2&2	18	84%	81.35
22402	1-3/4" round	N/A	N/A	90%	55.25
22602	1-3/4" round	N/A	N/A	90%	60.75



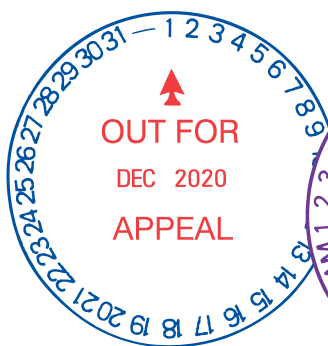
N75-042



N75-135



N85-333



N77-112



N78-323



22402



22602



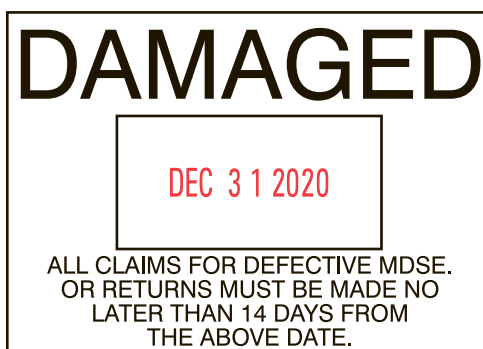
date stamp • date stamp • date stamp •

item	size	lines	char.	price
N90	1-3/16" x 1-15/16"	2&2	33	84.95
N92	1-3/4" x 2-1/2"	5&5	44	87.95

Comes with its own 2-color pre-inked base in your choice of any two colors: **red**, **black**, **blue**, **green**, **purple**, **orange**, **light blue**, **light green**, **pink**, **yellow** or **brown**.



N90-522



N92-215



VersaDater® It's a date stamp and more! Alone, VersaDater is an 8-year pre-inked line dater. The date is easily changed with a quick turn of the dial. When you snap on the pre-inked Impression Frame™, you create a whole new message dater. Message available in **red**, black, **blue**, **green**, **purple**, **orange**, **light blue**, **light green**, **pink**, **yellow** or **brown** ink. Date available in **red**, black or **blue** ink.



item	size	lines	char.		price
N80	1-3/4" x 2-1/2"	4&4	32	64%	93.95
N81	1-3/4" x 2-1/2"	4&4	32	68%	53.25
N82	1-5/16" x 2-1/8"	2&2	27	64%	83.75
N83	1-5/16" x 2-1/8"	2&2	27	68%	47.95
66210	1-5/16" x 2-1/8"	N/A	N/A	64%	53.95
66211	1-5/16" x 2-1/8"	N/A	N/A	64%	53.95
66213	1-5/16" x 2-1/8"	N/A	N/A	64%	53.95



N82-522



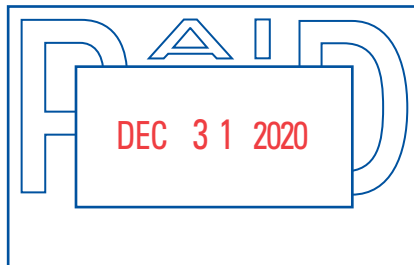
N80-136



N81-215



N83-522



66210



66211



66213



item	size	lines	char.		price
51111	1/8" x 7/8"	N/A	N/A	56%	38.25
51112	1/8" x 7/8"	N/A	N/A	56%	38.25
51113	1/8" x 7/8"	N/A	N/A	56%	38.25
52111	3/16" x 15/16"	N/A	N/A	56%	38.25
52112	3/16" x 15/16"	N/A	N/A	56%	38.25
52113	3/16" x 15/16"	N/A	N/A	56%	38.25

DEC 31 2020
51111

DEC 31 2020
52111

DEC 31 2020
51112

DEC 31 2020
52112

DEC 31 2020
51113

DEC 31 2020
52113



stock title stamps • stock title stamps •



Our signature mount with today's most common one-color title impressions. Many more titles are available from your sales rep if you don't see what you need here. As always, each stamp is re-inkable and guaranteed for life!

impression size: 1/2" x 1-5/8"

\$11.55



APPROVED

1008

DRAFT

1360

first class

1332

PRIORITY

1033

CLIENT'S COPY

1138

ENTERED

1021

for
deposit only

1333

RECEIVED

1203

COMPLETED

1026

ENTERED

1205

FRAGILE

1010

received

1223

COMPLETED

1214

E-MAILED

1650

MAILED

1218

REVISED

1219

CONFIDENTIAL

1130

FAXED on:
by:

1820

ORIGINAL

1111

RUSH

1334

COPY

1359

FAXED

1350

PAID

1201

SCANNED

1829

COPY

1006

FAXED

1216

PAID

1221

URGENT

1103

CREDIT

1019

FILE

1051

PAST DUE

1362

VOID

1117

DRAFT

1068

FILE COPY

1821

POSTED

1211

VOID

1825

FILE COPY

1071

POSTED

1047



stock title stamps • stock title stamps •



Our signature mount with today's most common two-color title impressions. Many more titles are available from your sales rep if you don't see what you need here. As always, each stamp is re-inkable and guaranteed for life!

Impression size: 1/2" x 1-5/8"

\$12.65



2038



2026



2027



2020



2030



2034



2023



2039



2018



2022



2028



2024



2004



2031



2032



2015



2037



2025



2035



2029



2017

Our signature mount with the most used specialty impressions for today's busy office. More titles are available from your sales rep if you don't see what you need here. As always, each stamp is re-inkable and guaranteed for life!

Impression size: 5/8" Diameter

\$9.25



11364



11418



11409



11307



11363



11420



11309



11407



11423



11362



11357



11417



11303



11305



11422



11415



11414



11358



11425



11421



11359

Please find refill ink on p.14 and re-inking instructions on p.15. All prices subject to change.



self-inking date stamp • self-inking date stamp •

item	mount	size	lines	char.	price
M71	plastic	1-1/8" x 1-5/8"	3 & 3	21	66.50
M41	steel	1-1/8" x 1-5/8"	3 & 3	21	66.50
M72	plastic	1" x 2-1/4"	2 & 2	28	77.50
M42	steel	1" x 2-1/4"	2 & 2	28	77.50

Our self-inking 10-year custom date stamp sizes come in two types of mounts. The M70 series features a lightweight plastic mount. The M40 series is constructed from sturdy steel. Available in red, black, blue, green, purple, uninked or 2 color blue/red ink.



M70 series M40 series

ORDER PLACED

DEC 31 2020

THE GREAT FRAME UP

M71/M41-402



M72/M42-613



traditional date stamp • traditional date stamp •

Traditional date stamps require a stamp pad. (see page 14)



40601 - \$44.25

size: 1-3/16" round
Traditional 10-year rotary date and time stamp. Change time by rotating outer wheel. Includes tweezers and 4 messages: RECEIVED, FAXED, PAID and ENTERED.



40601

PAID DEC 31 2020

40130

40130 - \$8.50

size: 1.5 4 year
Prints year and phrase: ANSWERED, APPROVED, BILLED, CANCELLED, COMPLETED, DELIVERED, ENTERED, FILED, PAID, RECEIVED, SHIPPED and VOID.



40100 - \$13.25

size: 00 10-year

DEC 31 '20
40100

40110 - \$4.25

size: 0 10-year

DEC 31 2020
40110

40111 - \$4.25

size: 1 10-year

DEC 31 2020
40111

40112 - \$4.25

size: 1.5 10-year

DEC 31 2020
40112

40113 - \$5.25

size: 2 10-year

DEC 31 2020
40113

40120 - \$8.50

size: 1.5 10-year
Prints year and phrase: ANS'D, BAL, CHG'D, CANC, C.O.D., ENT'D, FILED, FILLED, PAID, REC'D, SHIP'D and RET'D.

REC'D DEC 31 2020
40120

40300/40301/40302

\$12.75

size: 1-3/16" x 1-3/16"
Traditional message date stamp.



FAXED

DEC 31 2020

Pages _____

40300



40301



40302

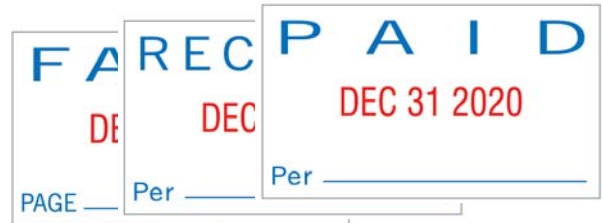
stock self-inking stamps • stock self-inking stamps •



40330 - \$39.75

size: 15/16" x 1-9/16"

Plastic 10-year message date stamp. Stamp comes with three separate phrase dies: FAXED, PAID and RECEIVED. Prints blue copy and red date.



40170 - \$17.50

size: 5/8" X 1 1/8"

Plastic 10-year message date stamp. Stamp comes with three separate phrase dies: FAXED, PAID and RECEIVED. Prints blue copy and red date.



40340 - \$17.50

size: 1.5

Plastic 10-year message line date stamp prints phrases: REC'D, ENT'D, ANS'D, PAID, SHIP'D, CHG'D, FAXED, CANCEL, C.O.D., FILED, RET'D, FILLED.



40140 - \$65.25

size: 1.5

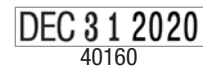
Metal 4-year message line date stamp prints phrases: REC'D, ENT'D, ANS'D, PAID, SHIP'D, CHG'D, FAXED, CANCEL, C.O.D., FILED, RET'D, FILLED.



40160 - \$17.50

size: 1.5

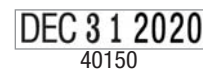
Plastic 4-year message line date stamp prints year or phrases: A.M., P.M., REC'D, ENT'D, ANS'D, PAID.



40150 - \$36.50

size: 1.5

Metal 10-year line date stamp.



40310/40311/40312 - \$44.25

size: 1" x 1-5/8"

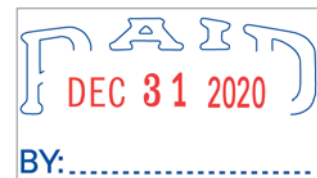
Metal 10-year message date stamp. Stamp comes in the following three styles: FAXED, PAID and RECEIVED. Prints blue copy and red date.



40310



40311



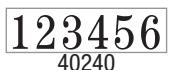
40312



40240 - \$77.50

size: 1

7-action, 6-band - The self-inking automatic number stamp operates consecutive, duplicates, triplicate or repeat. It has a tough metal frame and a durable, comfortable plastic handle to withstand even the most demanding work load. Automatic advance and black ink.



40240

Please find refill ink on p.14 and re-inking instructions on p.15. All prices subject to change.





Our self-inking custom stamps are constructed from rigid steel to stand up to daily use. They are engineered for smooth, steady operation. Available in red, black, blue, green, purple, or uninked.



M31-132

CASH ONLY

M32-142

BINA'S GRAPHICS
P.O. BOX 324
714 DAVID STREET
RENO, NV 89101

M34-134



type size: 1/8"

Create your very own 10-year custom message date stamp in minutes with this kit. Includes self-inking date stamp mount, red/blue ink pad, 1/8" type and tweezers.

40410 self-inking stamp kit - \$31.95 (not shown)

RECEIVED

DEC 31 2020

R.J. ALAN CO.

AABCDEEFFGHI JKLLMNNOPQRRSSTTUVWXYZÄÖÜÅÀÆ
AABCDEEFFGHI JKLLMNNOPQRRSSTTUVWXYZÄÖÜÅÀÆ
AABCDEEFFGHI JKLLMNNOPQRRSSTTUVWXYZÄÖÜÅÀÆ
AABCDEEFFGHI JKLLMNNOPQRRSSTTUVWXYZÄÖÜÅÀÆ
AABCDEEFFGHI JKLLMNNOPQRRSSTTUVWXYZÄÖÜÅÀÆ
AABCDEEFFGHI JKLLMNNOPQRRSSTTUVWXYZÄÖÜÅÀÆ
12345678901234567890123456789? ! : % & ' () * + , - . / : ; , - . - +
12345678901234567890123456789? ! : % & ' () * + , - . / : ; , - . - +
1234567890123456789? ! : % & ' () * + , - . / : ; , - . - +



Our 10-in-1 phrase stamp puts 10 popular titles in one convenient mount.

impression size: 3/16 x 1-1/2"

\$42.95



**COMPLETED
CONFIDENTIAL
COPY
DRAFT
ENTERED**

**FAXED
FILE COPY
ORIGINAL
PAID
RECEIVED**

81041

Please find refill ink on p.14 and re-inking instructions on p.15. All prices subject to change.



name plates

Available in two sizes. Choose plastic plate color and typestyle from charts below.

item	size	frame	price
K01	2"x 8"	n/a	10.95
K02	2"x 10"	n/a	13.25



profile view

standard aluminum desk signs

Available in two sizes. Choose plastic plate color and typestyle from charts below.

item	size	frame	price
K30	2"x 8"	gold	19.75
K31	2"x 8"	silver	19.75
K32	2"x 8"	black	19.75
K35	2"x 10"	gold	23.75
K36	2"x 10"	silver	23.75
K37	2"x 10"	black	23.75

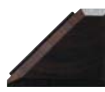


profile view

designer desk signs

Available in two sizes. Choose plastic plate color and typestyle from charts below.

item	size	frame	price
K20	2"x 8"	black	24.25
K24	2"x 10"	black	27.50



profile view

plastic plate on wood

Available in two sizes. Choose plastic plate color and typestyle from charts below.

item	size	frame	price
K80	2"x 8"	wood	29.75
K81	2"x 10"	wood	35.25



profile view

standard aluminum wall signs

Available in two sizes. Choose plastic plate color and typestyle from charts below.

item	size	frame	price
W30	2"x 8"	gold	19.75
W31	2"x 8"	silver	19.75
W32	2"x 8"	black	19.75
W35	2"x 10"	gold	23.75
W36	2"x 10"	silver	23.75
W37	2"x 10"	black	23.75



profile view

designer wall signs

Available in two sizes. Choose plastic plate color and typestyle from charts below.

item	size	frame	price
G30	2"x 8"	black	20.95
G35	2"x 10"	black	24.50

TO ORDER, FOLLOW THESE EASY STEPS:

- 1) Choose Type of Sign and Product Number.
- 2) Choose Typestyle Number (see chart at right).
- 3) Choose Plastic Color Number (see chart at far right).
- 4) Write sign copy, clearly, exactly as you wish it to appear.
- 5) Choose backing for wall signs: double sided tape, Velcro® or pin mounting for fabric partitions.

style 61	HELvetica ALL CAPS
style 62	Helvetica Initial Caps
style 71	HELVETICA BOLD CAPS
style 72	Helvetica Initial Caps
style 81	ROMAN ALL CAPS
style 82	Roman Initial Caps
style 91	ROMAN BOLD CAPS
style 92	Roman Bold Initial Caps

plastic color chart			
the outer color is the plate color, the inner color is the type color			
01 black/white	10 white/black	20 red/white	21 burgandy/white
30 blue/white	70 med walnut/white	75 brushed gold/black	76 brushed silver/black

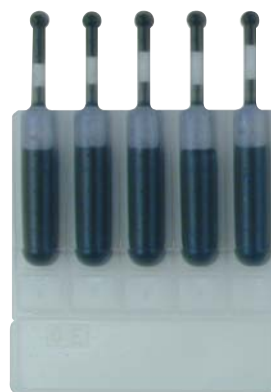


refill ink & pads • refill ink & pads •

item	description	color	price
22110	10ml bottle	lt. green	5.80
22111	10ml bottle	red	5.80
22112	10ml bottle	black	5.80
22113	10ml bottle	blue	5.80
22114	10ml bottle	green	5.80
22115	10ml bottle	purple	5.80
22116	10ml bottle	orange	5.80
22117	10ml bottle	yellow	5.80
22118	10ml bottle	pink	5.80
22119	10ml bottle	lt. blue	5.80
21111	10ml bottle	brown	5.80

item	description	color	price
22210	20ml bottle	lt. green	8.97
22211	20ml bottle	red	8.97
22212	20ml bottle	black	8.97
22213	20ml bottle	blue	8.97
22214	20ml bottle	green	8.97
22215	20ml bottle	purple	8.97
22216	20ml bottle	orange	8.97
22217	20ml bottle	yellow	8.97
22218	20ml bottle	pink	8.97
22611	60ml bottle	red	22.15
22612	60ml bottle	black	22.15
22613	60ml bottle	blue	22.15
22614	60ml bottle	green	22.15

item	description	color	price
22011	5 cartridge pack	red	5.75
22012	5 cartridge pack	black	5.75
22013	5 cartridge pack	blue	5.75



item	color	size	price
40711	red	2oz	5.50
40712	black	2oz	5.50
40713	blue	2oz	5.50
40714	green	2oz	5.50
40715	purple	2oz	5.50



Felt stamp pads come in 2 sizes.
The #0 is 2-1/2" x 3-3/4".
The #1 is 3" x 4-1/4".
Re-inkable.

item	color	size	price
87110	black	#0	3.09
87111	blue	#0	3.09
87112	red	#0	3.09
87113	green	#0	3.09
87114	purple	#0	3.09
87115	un-inked	#0	2.65
87120	black	#1	3.45
87121	blue	#1	3.45
87122	red	#1	3.45
87123	green	#1	3.45
87124	purple	#1	3.45
87125	un-inked	#1	2.99

stamp pad
refill ink



item	color	size	price
86500	black	25ml	3.95
86502	red	25ml	3.95
86510	black	50ml	6.75
86511	blue	50ml	6.75
86512	red	50ml	6.75
86513	green	50ml	6.75
86514	purple	50ml	6.75



• re-inking • re-inking • re-inking



We strongly recommend using only Xstamper® Refill Ink to re-ink your Xstamper pre-inked rubber stamp. It has been specifically formulated to flow cleanly through the micropores of the Xstamper's laser-engraved rubber. Using ink other than Xstamper Refill Ink can clog these micropores and void the Xstamper warranty. Please follow the directions below for your respective Xstamper mount. After re-inking, please allow stamp to sit up to 24 hours to reach maximum saturation.



Remove the handle and place 2-4 drops of ink in the openings on either side of the spring as shown.



Slide the impression cartridge out of the handle and place 2-3 drops of ink in the 4 openings as shown.



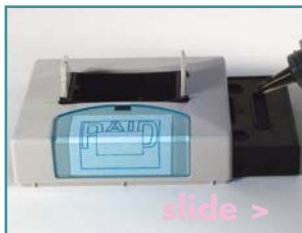
Remove the handle and place 2-4 drops of ink in the opening in the center of the mount.



Slide the impression cartridge out of the handle and place 2-3 drops of ink in the opening as shown.



Remove the Impression Frame™ and use an ink cartridge to put 2-3 drops of ink into the inking hole. Put 2-3 drops into the frame as well.



Put a few drops of ink in the XpeDater base and a few in the travel cap.



Put a few drops of the corresponding color ink into the the stamp base.

We strongly recommend using only ClassiX® Refill Ink to re-ink your Xstamper pre-inked rubber stamp. It has been specially formulated to work with the specific components of all ClassiX stamp products.

1. First, push down slightly on the top of the stamp and push the locking buttons on either side of the stamp. This will allow the ink pad to slide out.



2. Second, carefully slide the ink pad out. The inked side of the pad will be on the bottom, take care not to get ink on your fingers.



3. Third, put a few drops of ClassiX® refill ink onto the pad. For best results, allow the ink to saturate overnight.



